



QUALIFICATIONS  
K-12 EDUCATION





1600+

*Employee-  
Owners*



58

*Years of K-12  
Experience*



33

*Offices  
Worldwide*



2000+

*Design Awards*

## Who We Are

We're an integrated design firm.

Our promise is to elevate the human experience through design. This inspires a culture of design and fuels the work we do around the world. We are 100% employee-owned: every employee is literally invested in our clients' success. At the core of our firm are interdisciplinary employee-owner teams, engaged with all project life-cycle stakeholders. These teams champion true collaboration, open information sharing, shared risk and reward, value-based decision making, and proficient use of technology to elevate design.



### Locations

Austin

Charlotte

Chicago

Cleveland

Colorado

Springs

Columbus

Dallas

Denver

Des Moines

Dubai

Durham

Honolulu

Houston

Kansas City

Las Vegas

Lincoln

Los Angeles

Minneapolis

Nashville

New York

Omaha

Orlando

Phoenix

Portland

Riverside

Sacramento

San Diego

San Francisco

Seattle

Shanghai

Sonoma

Tucson

Washington, D.C.

# DLR Group K-12 Education Sector

DLR Group is transforming the educational learning environment.

Our team of educators, researchers, anthropologists, planners, architects, engineers, building performance experts, and interior designers draw from evidence-based design to aid schools in bridging the gap from old and new to improve all facets of operations, and elevate learning through design. Understanding the rapid pace of technological, social, and cultural change, our K-12 Education Studio works with schools across the country to navigate this change to better serve communities and improve educational experiences and outcomes for students.

**1<sup>st</sup>** Architectural Firm with  
3 MacConnell Awards for  
Innovative School Design

**#1** Leading Green Design Firm  
for Educational Facilities  
*Engineering News-Record*

**850+** Early Childhood &  
Elementary Schools

**300+** Middle & K-8 Schools

**800+** High Schools &  
CTE Facilities

**500+** Educational Facilities Plans  
& Long Range Facility Plans

## Disciplines & Services

Architecture  
Engineering  
Interiors  
Planning

Acoustic Design  
Audiovisual Systems Design  
BOLD  
Development Management Services

Experiential Graphic Design  
High Performance Design  
Landscape Architecture  
Lighting Design

Reality Capture  
Renewables  
Science+Technology  
Smart Buildings

Sustainability  
Telecom+Security Systems Design  
Theater Design

## **DLR Group's K-12 Education Ethos**

Empowering learners  
through a forward-looking  
research-informed design  
focus that delivers  
transformational opportunity  
and fulfillment for all.

### **Engagement**

An internal sense of drive emerges when given opportunities to interact with our environments. Examples of this attribute may include design elements that are sensory-driven, movable, colorful, and tactile.



## Wellbeing

We design to meet the learner's social, emotional, and physiological needs. We recognize that feeling safe is a critical component of wellbeing. We leverage sustainable design strategies, including daylighting, air quality, and thermal comfort to support the sense of wellbeing, increased energy, and decreased absenteeism.

## Community

Schools are a catalyst for positive change within a community. They can bridge divides, foster relationships, and create a sense of belonging both within a school and within a larger community.

## Joy

This intangible is what we aspire to. We design schools to celebrate learning through beautiful and inspiring environments that stimulate the senses. Our aim is to create a joyful experience for all users, both young and old.



K - 1 2   E D U C A T I O N

## High Schools





# Albert Einstein Academy High School

San Diego, CA  
San Diego Unified School District

50,773 SF  
600 Students

The dream of an Albert Einstein Academy Charter High School stretches back to Albert Einstein Academy's opening in 2002. With just a few dozen students in kindergarten, AEA's founders foresaw the wisdom of a K-12 educational journey grounded in the International Baccalaureate program. DLR Group's solution is the adaptive reuse of a six-story, 1970s hospital building nestled prominently in the hillside of Grant Hill Park overlooking downtown San Diego.





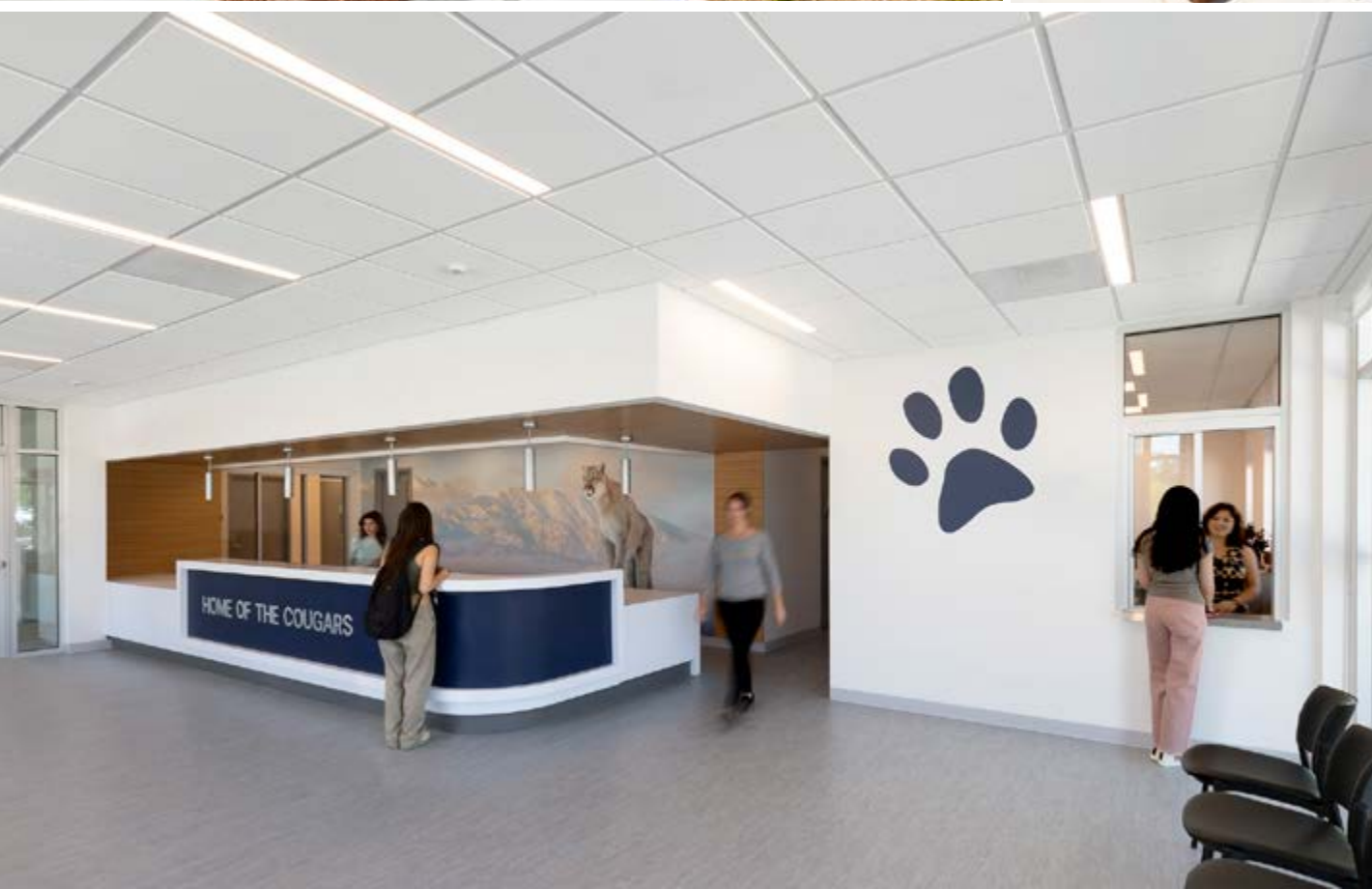
# Beaumont High School

Beaumont, CA  
Beaumont Unified School District

60,000 SF  
2,000 Student Expansion



Beaumont USD is in a high growth area and anticipates nearly 1500 more students arriving at the high school over the next decade. Rather than build a new campus, they chose to expand the existing campus which posed the challenge of adding two new classroom buildings and occupying the spaces in less than a year and a half. DLR Group accomplished the feat through our extensive knowledge of modular construction. The new buildings include learning environments that support various Career and Technical Education pathways. Furthering the District's "Be Ready Beaumont" initiative, their World of Work program provides opportunities for students to explore various career fields. The site work includes a new plaza between the classroom buildings designed with surface patterns used for Robotics competitions as well as new fields for their athletic complex.



# Beverly Hills High School

Beverly Hills, CA  
Beverly Hills Unified School District

51,725 SF  
2,000 Students

Beverly Hills High School, a beloved civic landmark steeped in tradition, stands proud above the expansive Graduation Lawn, a park-like setting where graduations have been a celebrated community event since 1928. Over time, the small campus lacked a master plan which led to the site developing into a hodge podge of buildings which no longer facilitated education. Additionally the campus was bisected by an asphalt thoroughfare, Heath Avenue, which prioritized car traffic and was unsafe for students to cross.

DLR Group's conceptual design respected the historical building by preserving the building facade and lawn while shaping the future with state of the art "next generation" academic and athletic facilities. Space was limited and so parking was placed underground to maximize usable area for regulation size athletic fields, which also supported the project's effort to improve pedestrian accessibility across the campus.





# Compton High School

Compton, CA  
Compton Unified School District

223,700 SF  
2,000 Students



Compton is well known for producing music and athletic prodigies, and now this community has an opportunity to set the standard for educational excellence with a new high school. DLR Group's design will transform the District's oldest high school campus into a 21st Century learning environment that elevates education for all Compton students and staff. The design solution centers around keystone-shaped learning suites that support project-based learning, student exploration and general instruction. Designed specifically for Compton High School, the keystone learning suites will help advance interdepartmental collaboration and build stronger relationships between students, teachers, and administrators.



# Liberty High School

Menifee, CA  
Perris Union School District

269,000 SF  
2,569 Students



The educational specifications for Perris Union District's High School #4, now named Liberty High School, focused on three primary academic concepts: small learning communities, centers of applied learning, and the Center for Advanced Science Exploration (CASE). The planning effort implemented these concepts effectively and introduced three strategies for their successful implementation: Flexibility – Collaboration – Socialization.

The applied learning centers were uniquely defined by public influence. Student interests, community input, local labor trends, and integration and articulation with local businesses and community colleges were all considered to make a practical, informed, hands on learning space.



# Logan Memorial Educational Complex

San Diego, CA  
San Diego Unified School District

241,000 SF  
1,900 Students

The Logan Memorial Educational Campus is a walkable neighborhood learning center, engaging parents and inspiring students. Student-centered learning environments support hands-on learning, teamwork, critical thinking and problem-solving skills.

Serving grades TK-12, the campus rebuilt the existing K-8 campus and added a new high school, the first for Logan Heights, and an infant daycare center. The design builds on the rich cultural history of the area with architectural influences of Mexican modernism with simple, bold forms and colors.

Providing new vibrant facilities in this community was essential to create equity within the District, but more importantly, to support academic changes to close the achievement gap. This project provides generational change to the community by housing new resources and programs and offering career or college readiness upon graduation.









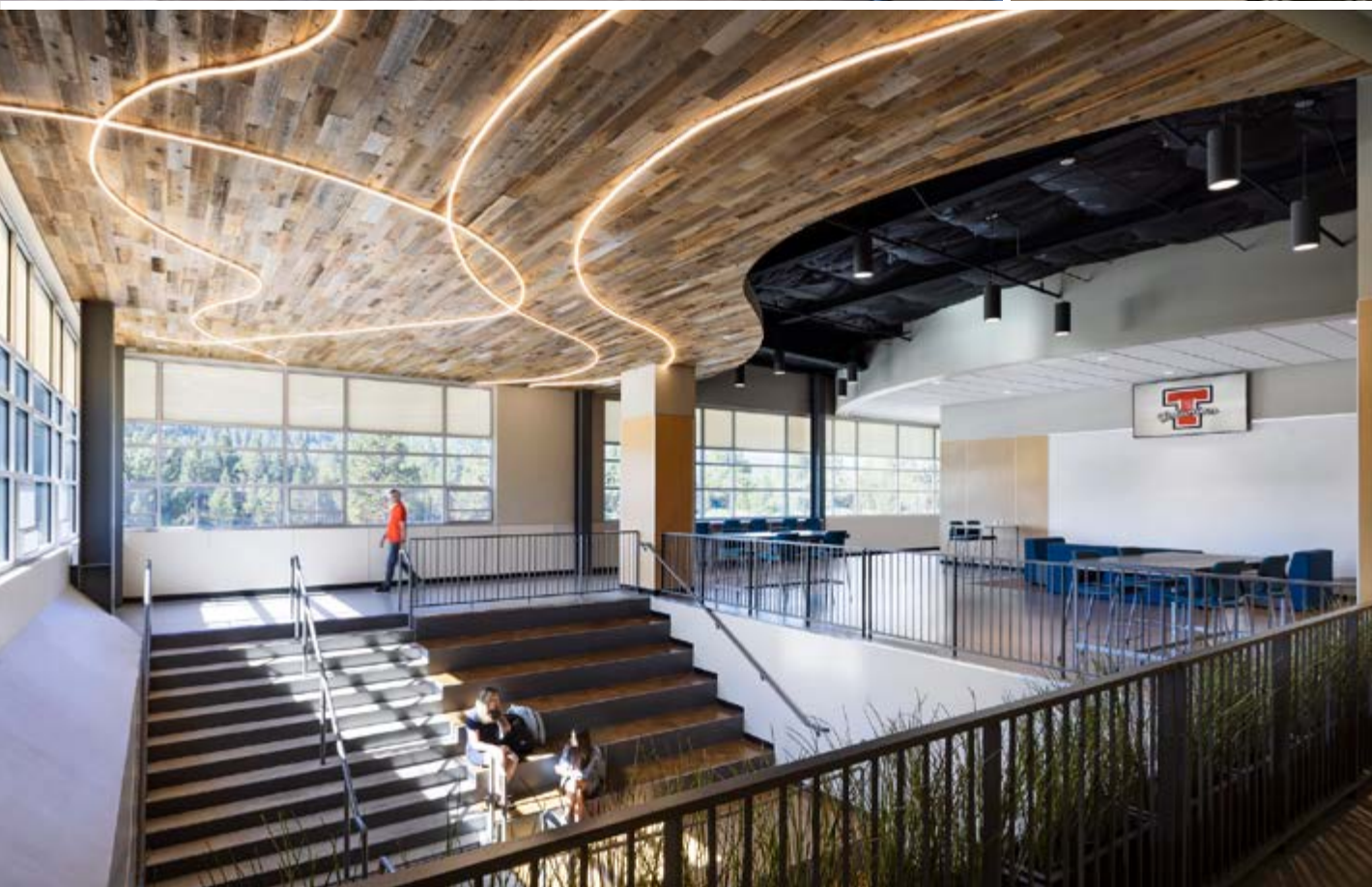
# Truckee High School

Truckee, CA  
Tahoe-Truckee Unified School District

173,000 SF  
2,500 Students

To provide challenging and engaging learning opportunities for its students, the Tahoe Truckee Unified School District focused on an integrated modernization and renovation program at Truckee High School. DLR Group was engaged to design an enriched campus, replacing modular buildings with new construction, renovating educational and support spaces, and enhancing student security, all while reflecting the natural and built environment of the surrounding community. With a palette of natural stone, wood, and pervasive natural light, the beauty of the Sierra Nevada Mountains and the historic neighborhood character are reflected in both the exterior and interior spaces.





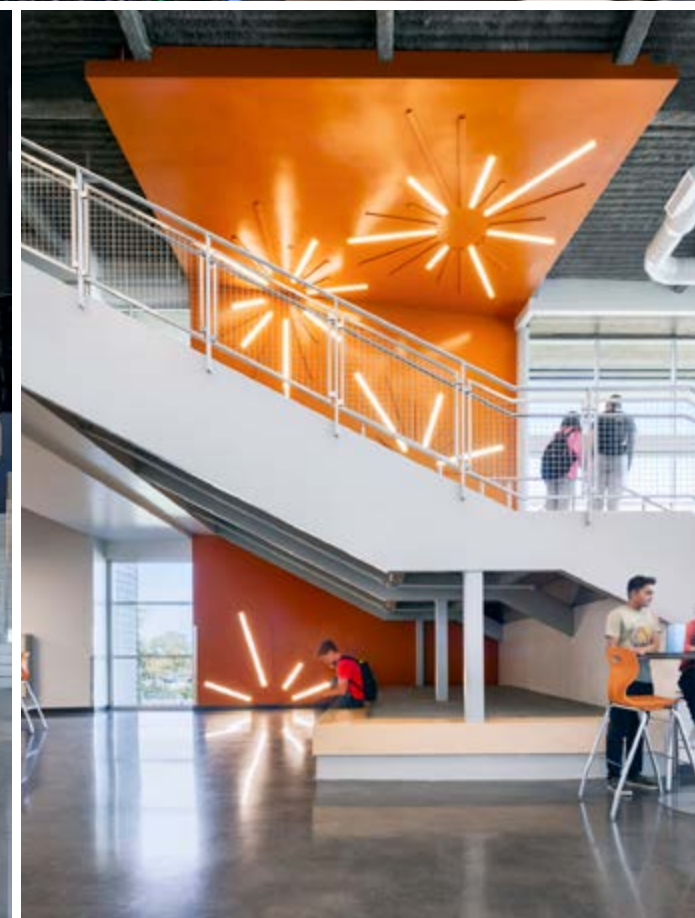
# West Park High School

Roseville, CA  
Roseville Joint Union  
High School District

338,200 SF  
2,000 Students

The new West Park High School embodies the guiding principles articulated by the district to create an environment that is student-centered and highly collaborative. DLR Group's design begins that experience at the front door, where students and guests enter the administration building and adjacent Learning Commons, a combination of student social space, study areas, interactive collaboration space, and accessible student services including counseling that reinforces the way students feel connected to the school and enhances their sense of belonging. The academic portion of the campus consists of four, three-story Collaborative Learning Suites. The ground floor specialty classrooms contain full-height glass walls creating a "storefront" allowing education to be on display. Operable garage doors extend the classroom space to outdoor green spaces, creating additional teaching opportunities.





K - 12 EDUCATION

## Elementary Schools





# Bill Libbon Elementary School

Santa Maria, CA  
Santa Maria-Bonita School District

56,890 SF  
750 Students

The new campus is designed with the safety and security of students first and foremost. A U-shaped site configuration envelopes students in a safe and welcoming way. The buildings open to the play area so that visibility to all corners of the campus is available from almost anywhere in the buildings. There are two main controlled entrances – one between the Administration suite and the Kindergarten Building, and the second between the Kindergarten Building and the Multipurpose Building. The resulting interior courtyard becomes a place of countless collaboration and learning opportunities by enclosing the primary outdoor areas with academic environments, student support, and gathering areas. The architecture reinforces this idea through the permeability of its interior facades both materially and visually.





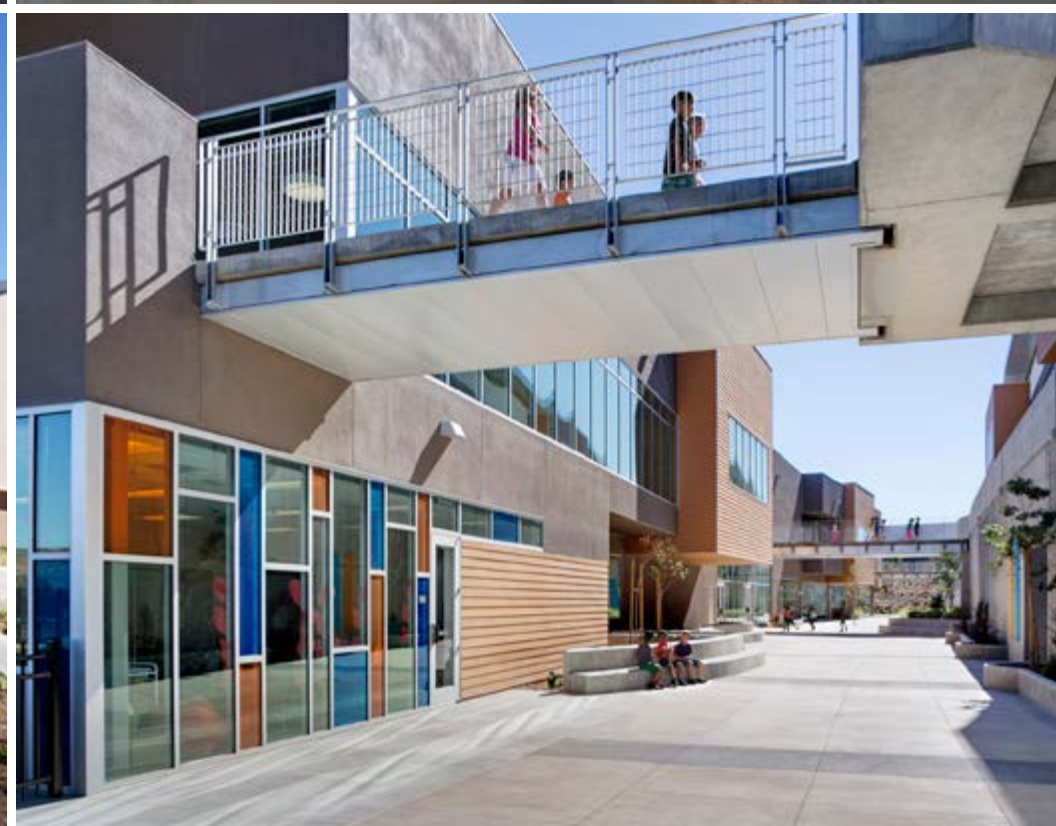
## Design 39 K-8 School

San Diego, CA  
Poway Unified School District

156,000 SF  
1,500 Students



The design for the new Design 39 Campus encompasses a variety of learning spaces, such as learning pods with non-traditional grade spans, collaboration areas, maker spaces, and imagination studios that elevate learning. The campus prioritizes self-autonomy to prepare students to be independent and responsible for their learning journey and connects learners to the community through business and industry partnerships.



# Emma Wilson Elementary School

Chico, CA  
Chico Unified School District

5,700 SF  
627 Students



DLR Group's design of the new kindergarten building celebrates one of Chico's earliest educators with a passion for art, Emma Wilson, the school's namesake. Our concept incorporates art in the architecture and provides areas for students to express their art talents. A "collaboration grove" is designed just outside of the collaboration room to be used as a quiet outdoor space surrounded by mature evergreen trees. The building is oriented in a way to take advantage of northern indirect light into each of the classrooms, and the roof is sloped up to the north to create clearstory glass on the north wall. The placement of the building also creates a barrier from the complex to the adjacent public park. Where possible the building acts as the secured fence line to the campus, limiting access and views into the kindergarten complex.



# Golden West K-8 Modernization

Manteca, CA  
Manteca Unified School District

66,783SF  
969 Students

The design brings new, adequately sized, kindergarten rooms to the front of the campus in a building with an expanded administration area. An existing underutilized classroom area is converted to more administration space and a state-of-the-art library. The existing gym receives a kitchen addition to double as a cafeteria and all classrooms were modernized. The front parking and drop off was redone to improve flow and fields and courts were upgraded.





# Mission Bay School

San Francisco, CA  
San Francisco Unified School District

81,810 SF  
550 Students



The Mission Bay School creates a new center of community life within this emerging San Francisco neighborhood to bring together families, educators, and community institutions within a vibrant and growing hub of activity. DLR Group's design for the space achieves San Francisco Unified School District's vision of supporting and enhancing equity, energy performance and community values. The Mission Bay School blends the joy of learning with dynamic architecture in a four-story building that provides a pre-K through 5th grade elementary school and a Linked Learning Hub for high school students to connect with surrounding hightech and medical institutions like UCSF. DLR Group used the principles of Universal Design for Learning (UDL) to create a variety of flexible and engaging indoor and outdoor spaces that support various approaches to teaching and learning.



# Neal Dow Elementary School

Chico, CA  
Chico Unified School District

50,773 SF  
600 Students

To accommodate increased student population growth, Neal Dow Elementary School was in need of an expansion and modernization to increase classroom capacity. DLR Group's solution includes the removal of existing portables, reconfiguring three existing classroom buildings, and applying a new, unifying campus color scheme. A new entry for reorients the administration at the front of the school allowing for increased safety and security.

The expanded library enhances connection to the rest of the campus. All kindergarten classrooms, including two new ones, are now arranged in the same building as the library, providing better access to large group learning rooms, restrooms, and the existing kindergarten play area. A new classroom building features a large flexible collaboration space found along the main axis of the campus entry. The new multi-purpose building fulfills a variety of needs, including athletics, performing arts, and dining.





# Roosevelt Elementary School

Anaheim, CA  
Anaheim Elementary School District

46,678 SF  
750 Students

The new Roosevelt Elementary School replaces outdated facilities built in 1957. The master plan calls for the complete demolition of the existing campus with a new school to be built in its place, focusing on Science, Technical, Engineering, Art and Math. The vision is to remove the perception of a barrier between the school and the public. A welcoming feature is located directly above the administration lobby. This is known as the Research and Innovation Center, or RIC. The two-story welcome lobby connects both spaces. Visitors will be able to glimpse the activities going on in the RIC as students do research, design, and create projects that illustrate their learning. These projects will be on display throughout the RIC and the welcome lobby below for everyone to view.





# Summerwind K-8 School

Calimesa, CA  
Beaumont Unified School District

94,166 SF  
1,166 Students



To support growing enrollment and improve academic outcomes, Beaumont USD embraced a K-8 education model for the new Summerwind School. DLR Group's design for the new campus creates an upper "Academic Campus" and lower "Athletic Campus". The Administration Building anchors the Academic campus while classroom buildings and MPR/Gym/ Food service building structures form an inner "Central Park" where all grades of students can play, study, congregate, and teacher/ staff can easily supervise. This central park is the green belt of the campus that separates the lower grade and the upper grade classroom buildings, but also ties all the building structures together.



# Truckee Elementary School

Truckee, CA  
Tahoe-Truckee Unified School District

77,180 SF  
800 Students



DLR Group was engaged by Tahoe Truckee Unified School District for a comprehensive addition and modernization of the Truckee Elementary School campus. Paramount in responding to the District's recent bond is the replacement of over 20 relocatables with permanent classrooms and a new face along Donner Pass Road. DLR Group's design is based around an education specification put in place after an extensive programming phase. In modernizing Truckee Elementary School DLR Group is incorporating 21st Century Learning Environments into buildings that were originally built in the 1950's to match concepts being included in the new construction.



# Westlake Charter K-8 School

Sacramento, CA  
Natomas Unified School District

84,000 SF  
1096 Students



After successfully completing the facilities master plan for Natomas USD, DLR Group was retained by the District to design a new campus to house 1096 students in Kindergarten to eighth grade. Westlake Charter School operated from two separate campuses, consisting entirely of portable classroom buildings. DLR Group's design provides a permanent school to combine all K-8 students in one location. With a curriculum focusing on diversity, foreign language and academic excellence, the new learning environment provides the backbone for the growth of these future leaders. The organizational model utilized promotes cross-pollination between classes and age groups, creates common areas to encourage a sense of community, and provides ample outdoor learning spaces with all of these components all serving to support this mission.



# Bridging Organization, Learning, and Design

To maximize the impact of capital investments, BOLD™ services provides the tools and strategies to bridge modern school designs with positive educational outcomes for all.

BOLD connects districts and designers to ensure the vision for teaching and learning is supported by the built environment. We inspire innovation by facilitating organizational change and cultural transformation to elevate student outcomes.

91%

of BOLD teachers felt their classrooms support movement versus 77% of the national average.



52%

of BOLD-empowered teachers spend most of their time in collaboration and shared spaces (conducting diverse learner-centered activities), versus just 33% nationally.



**Your teachers, staff, and administrators must be prepared for the opportunities that come after the ribbon cutting ceremony in a new or improved future-ready facility.** Our team of educators has personally experienced the transformation to innovative learning environments, and we understand the challenges you face during the change process. We're here to bring clarity to that process, empower educators, and inspire innovation to help you elevate student outcomes.

Our systems-based approach supports and guides operational shifts required to implement future-ready learning. We address teaching and learning while leveraging collaborative learning environments and school culture to increase confidence and engagement of educators and learners.



**BOLD is a process to shift human behavior.**

The BOLD process is designed to lead you through a series of defined explorations that discover, imagine, define, develop, and achieve the path to your desired outcomes. Within this framework, BOLD's specific services are custom-selected to meet the unique needs of your district or school. These might include strategic planning, process consulting, spatial affordance training, change leadership coaching, culture development, inquiry-based learning implementation, teaching and learning consulting services, or others.

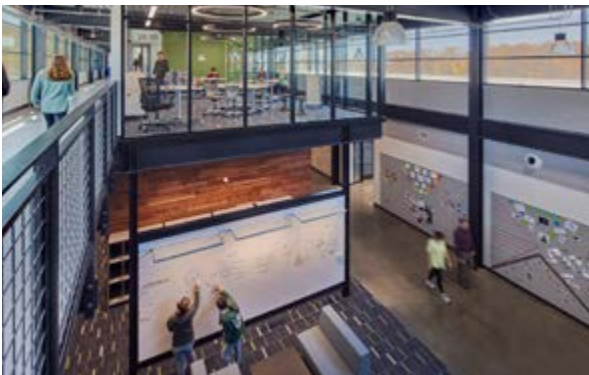
# Educational Facilities Planning Expertise

## The Evolution of Educational Facilities Planning

In the past, educational facilities planning has focused on facilities condition assessments and right-sizing schools based on available funding.

Today, DLR Group has evolved its methodology to include a more comprehensive approach that helps clients to focus not just on buildings, but also on how architecture can enable and support equitable teaching and learning experiences for all students.

Over the last five years, we have seen planning evolve into a multi-faceted, kit of parts ranging from the more traditional definition of building deficiencies to approaches on educational transformation, equity, energy, and so much more. Now driven by new and tailored definitions of teaching and learning, deep dives into data, comprehensive engagement with broad-based communities, and new funding models that support transformational education, educational facilities planning has expanded its breadth and depth.



Every district has individual needs and priorities and, often, approach planning as sequential scopes of work depending on its most pressing need and funding availability. There is no right or wrong answer to how scopes get bundled. However, the key priority should be a comprehensive plan that can leverage the best return on investment in terms of long-term educational outcomes for all over time.

Our approach to educational facilities planning is further informed by the breadth and depth of our international experience.

*DLR Group teams across California are leading the industry with an innovative, web-based platform that gives districts a powerful tool to prioritize and create cost scenarios for capital improvement programs. Our extensive community outreach process engages students, educators, parents, and community members to build trust and ownership and to develop a plan that is a true reflection of the values and expectations of the community.*

### Planning Communication

+

#### Education and Policy

Vision and Strategic Plan

Equitable Experiences

+

#### Data Collection Existing Conditions

Facilities Assessments

Educational Adequacy

+

#### Community Voice and Culture

Context

School Communities

+

#### Funding and Policy

Operational Policy

Logistics and Funding

# High Performing Buildings

The demand for electrification is rising worldwide. Developers and Engineering, Procurement, and Construction firms rely on the expertise of qualified, licensed renewable energy planning and design engineers.

We all want efficient, sustainable, and healthy environments where occupants can thrive. Designs that consider details like excellent thermal comfort, acoustic privacy, glare, natural light, and indoor air quality while being visually stimulating, ergonomic, and durable have a beauty that is beyond skin deep.

**Navigate climate goals while enriching occupant experience with science-based performance simulations.**

Working as champions of integrated design we start by setting client-driven key performance indicators. High performance buildings are constantly measured and verified throughout the design process. To exceed your goals, key design analysis and exploration tasks are prioritized to occur earlier in the project; maximizing value while maintaining design integrity. The result is sustainable spaces designed for energy and water efficiency, indoor environmental quality, occupant health, and well-being.

DLR Group's high performance team is comprised of nationwide experts with backgrounds in architecture and engineering, seamlessly integrated into a project design team. This integration brings a multitude of perspectives that make an impact on both people and building performance.

**Energy Modeling**  
**Computational Fluid Dynamics**  
**Natural Ventilation Analysis**  
**Thermal Comfort Studies**  
**Building Envelope Analysis**  
**Daylighting Analysis**  
**Whole Building Life Cycle Assessments**  
**Water Use, Balance, and Savings**  
**Certification Support**

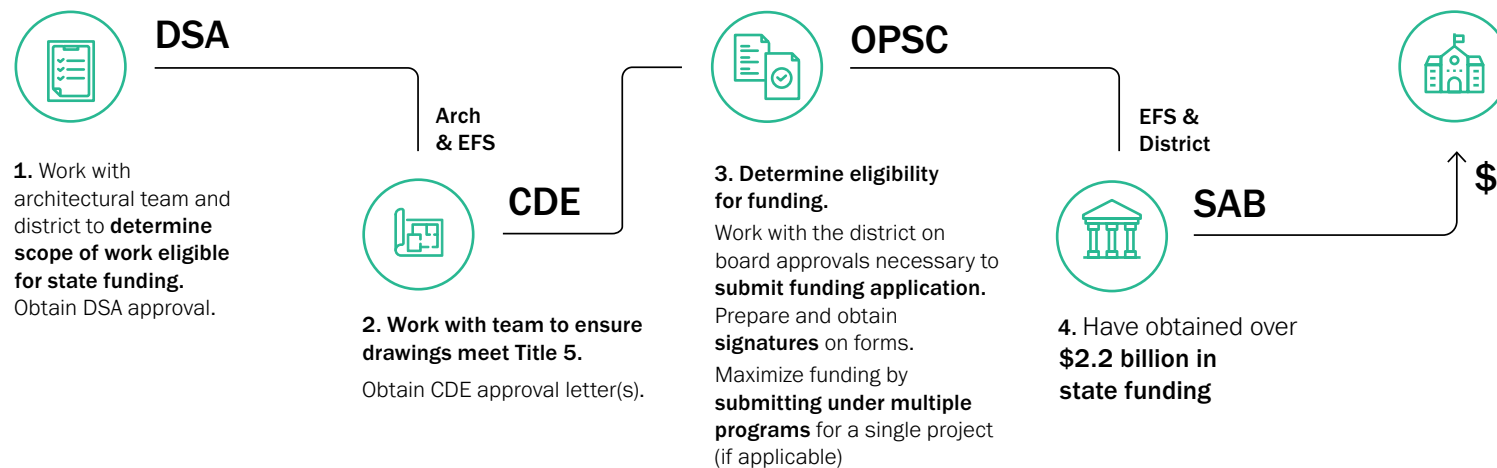


# State Funding Services

Education funding services is fully integrated with the design teams to efficiently and accurately submit applications to CDE and OPSC to secure funding.

*“DLR Group was instrumental in assisting the Perris Union High School District to obtain \$58M in state funding for our newest high school.”*

Candace Reines, Deputy Superintendent  
Business Services, Perris Union High School District



As specialists in designing education facilities in the State of California, DLR Group staff understands how critical it is to have professional working relationships with various State Agencies involved in school projects. We interact daily with the Division of State Architect (DSA), California Department of Education (CDE), Office of Public School Construction (OPSC) and the Division of Toxic Substance Control (DTSC) for projects. We maintain these relationships because we know what it takes to design a school and obtain the necessary approvals for school construction. We work with our clients in every aspect of the school building process - from determining eligibility to obtaining DSA Closeout.

In order to obtain approvals from OPSC and CDE we will serve as the district's advocate in any manner they choose; serving as an extension of their staff and handling all paperwork and processing or work with consultants and Program Management firms they may have under contract. In all these capacities, we have delivered exceptional client service and worked together to obtain funding for projects.

# Unparalleled Expertise in Career and Technical Education (CTE) Facilities

## What is it?

Career and Technical Education/Applied Learning, including Science, Technology, Engineering and Math (STEM), as well as Science, Technology, Engineering, Arts and Math (STEAM) prepares students for their future by connecting secondary education with college expectations, industry partners and labor market demands. Programs include specializing in teaching applied sciences, modern technologies, career preparation, and trade skills, offering students unique opportunities to create pathways for future professional success.

The transformation of teaching and learning to a balanced curriculum comprising both theoretical and applied learning is fostering programs in everything from the “maker movement” to STEM to STEAM to CTE. These programs are growing in popularity, while their ability to engage and connect students is redefining how learning environments are designed. DLR Group leads a robust, collaborative design process with school districts around the country which empowers students, teachers, school leaders, architects, engineers, and others to create transformational learner-centered learning environments. These 21st century learning environments are agile to accommodate different learning styles and activities through the course of the school day, while also flexible and adaptable to the inevitable short and long term changes that will occur in curriculum and program.

Applied Learning looks beyond secondary school, encouraging students to become lifelong learners. It benefits students by giving them:

- Industry accreditation
- Real-world relevance in curriculum
- Leadership development through student organizations
- Dual enrollment
- Peer-to-peer and student-to-teacher collaborative environments
- Laboratory or studio spaces to translate theory into practical application

## Why does it matter?

Workers in the 21st century economy are expected to have an average of seven different careers over their lifetime. As the pull of an ever-changing economy connects with a push from students striving to create their pathways toward advancement, school districts of all shapes and sizes are experiencing a cultural transformation. The one-size-fits-all mindset that once permeated our education system is steadily being replaced with personalized learning programs, allowing for a more student-centered approach that supports success by encouraging engagement, collaboration, collective interdisciplinary problem-solving and creativity.

## Career Clusters

*Agriculture, Food & Natural Resources*

*Architecture & Construction*

*Arts, AV Tech, & Communication*

*Business Management & Administration*

*Education & Training*

*Finance*

*Government & Public Education*

*Health Science*

*Hospitality & Tourism*

*Human Services*

*Information Technology*

*Law, Public Safety, Corrections, & Security*

*Manufacturing*

*Marketing, Sales, & Service*

*Science, Technology, Engineering, & Math*

*Transportation, Distribution, & Logistics*



## Sustainability

Meeting the  
Climate Challenge

Today, more than ever, it is essential to deliver sustainable designs with effective client-focused outcomes that exponentially impact our people, our communities, and our planet. Imagine a world where considerations about the built environment include behavioral awareness, resource conservation, human health, community health, and even our ecological future.

As a design firm, we live out our core value of environmental stewardship through building design and planning solutions. Thinking bigger and further in 2024 about sustainability starts with holding ourselves accountable. This is the reason we commit to work that aligns with goals of the industry including the Architecture 2030 Challenge, the China Accord the A&D Material Pledge, the SE2050 Challenge, and MEP 2040. More than just thoughts on paper, it's the way we do business as we help clients achieve their energy, environmental, and ESG goals. In addition, in 2023 we signed the Urban Land Institute's Commitment to Health and Equity in the Built Environment.

### Raise the Bar

The average reduction target of predicted energy use for qualifying projects of the DLR Group design portfolio with performance data has consistently exceeded the national peer group average. In FY23, our integrated designs generated a 50 percent energy reduction\* compared to average buildings.



*3.9M metric tons of GHG avoided in FY2023 alone.\**

Our sustainable designs in 2023 translated into energy and environmental savings in these ways:



490,000

*Homes Powered  
in One Year*



860,000

*Passenger Vehicles  
Removed from Roads*



4,650,000

*Acres of  
Forest*

\*GHG emissions are estimated using national average fuel ratio for energy use in buildings and EPA's Power Profiler Tool.

## Integrated Market Sectors

Our commitment to design excellence is reflected in our deep understanding of the value of integrated practice and collaboration across market sectors. By bringing together teams of diverse skills and backgrounds, we push the boundaries through a client-first forward-thinking mindset.



Civic  
Cultural+Performing Arts  
Federal  
Healthcare  
Higher Education  
Hospitality  
Justice  
K-12 Education  
Mixed-Use  
Sports  
Transportation  
Workplace

ELEVATE *the*  
HUMAN EXPERIENCE  
THROUGH DESIGN



[DLRGROUP.COM](http://DLRGROUP.COM) >