

Building Our Waldorf School: *Campus Design Inspiration*

PRESENTED BY: JENNIFER BRYAN



BLUE OAK SCHOOL

A WALDORF-INSPIRED PUBLIC CHARTER (K-8)

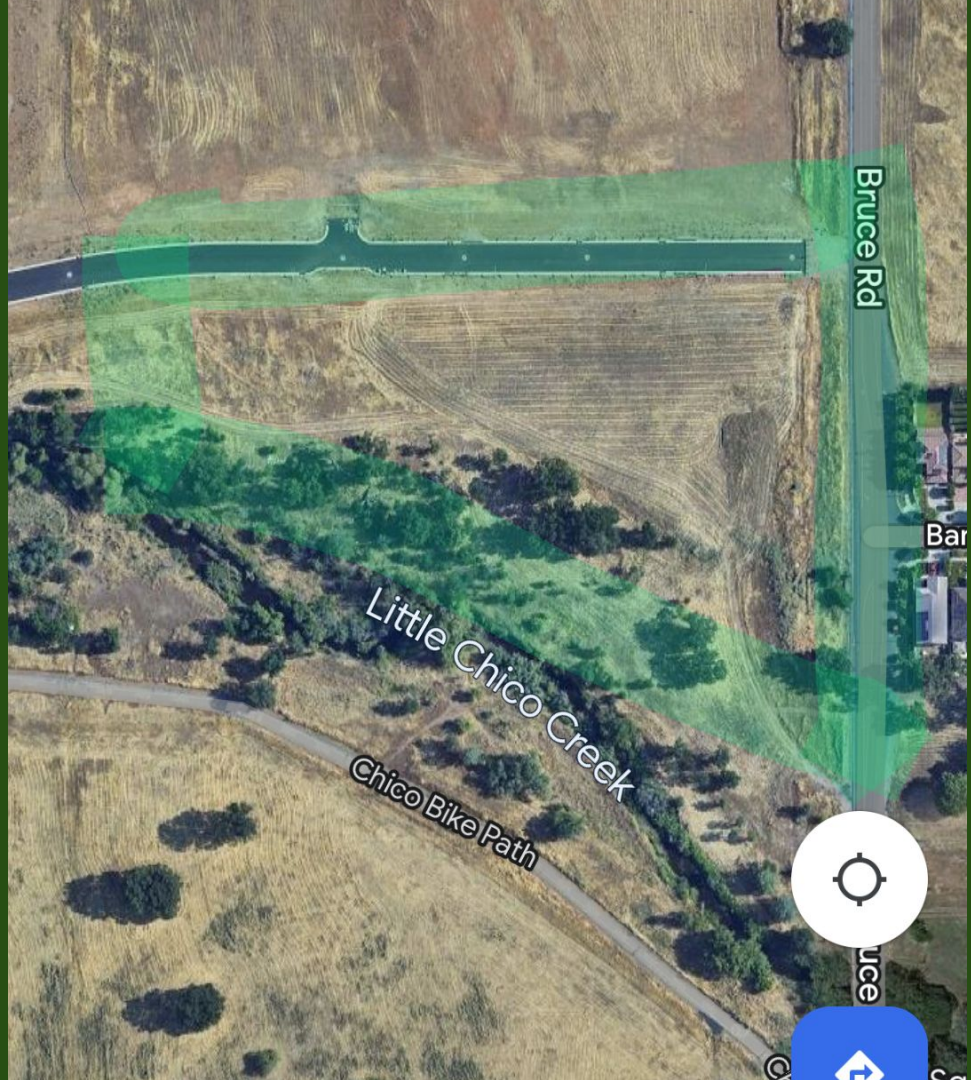
Steiner Schools

Steiner describes—with reference to the Goetheanum—the importance of an architecturally coherent and integrated community, and how this in turn affects social harmony and unity. The visual arts have the task of transforming our consciousness and helping us build a better society by reaching the hearts and minds of children and their families. In words highly relevant to our time, Steiner shares that good architecture along with modeling Goodness, Truth, and Beauty, has the potential to shape a more peaceful world and develop the Whole Child.

Breathing & Sleeping . . . Balance
Teaching long term memory through affect
Images, thematic stories, tales of heroes
Movement, Nature, Craftsmanship, Music

Our Plot of Land

- 2.47 acres
- CARD park
- Oak trees lined creek
- Bike path
- Roads + street light
- Bus stop



Our Neighborhood: Meriam Park

<https://www.meriampark.com/>

Elevations:

- Spanish Revival
- Modern Scandinavian
- Craftsman
- Industrial

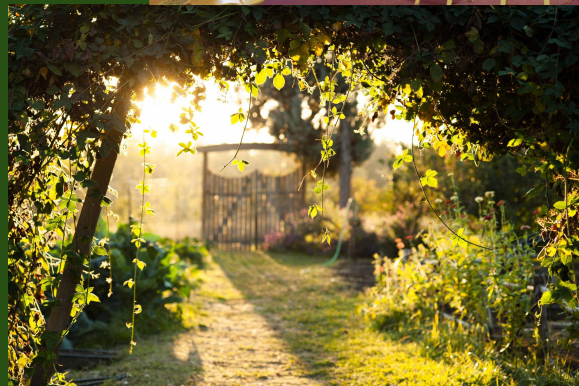


Basic Needs

- **Early Childhood** Preschool, TK, Kindergarten classrooms (x3)
- **Elementary School** 1st-5th grade classrooms (x5)
- **Middle School** 6th-8th grade classrooms (x3)
- **Additional Classrooms** Handwork, Music, Violin, Music, Science, Reading, Math, SPED, Speech, Wellness (x10)
- **Auditorium** P.E. / Theater / Kitchen / Nutrition
- **Administration** Director & Principal offices, Front desks: Receptionist, Registrar, Business Manager, Exec. Assistant, Community Coordinator, Nurse + first aid restroom
- **Additional Spaces** School Library, Staff Workroom, Staff Lunchroom
- **Large Closets** Records, Technology, School Supplies, Janitorial, Parent Council, Community, Backstage (x7+)
- **Outdoors** Covered/shaded traditional playground for sun/rain, turf track/field, Garden(s), Early childhood "Forest school" playground, Parking, Drop-Off Zones, amphitheater semi circle w/ rising benches for assemblies/ceremonies

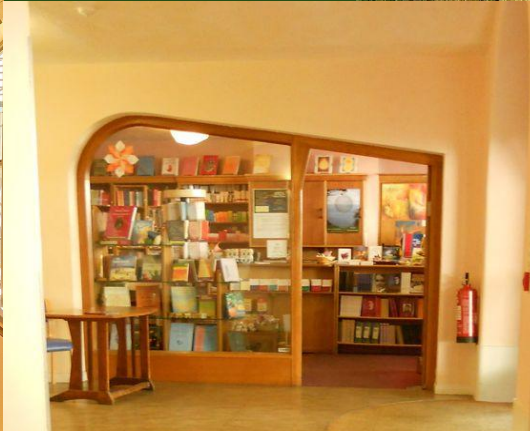
Early Childhood

- Play-based Kindergarten
- Outside daily, all-weather
- Imagination / hands-on
- Social skills priority



Grades School

- Thematic enriched programs
- Community building athletics
- Student-made textbooks
- Classical Liberal Arts education
- Hands-on, minimal tech



Aesthetic

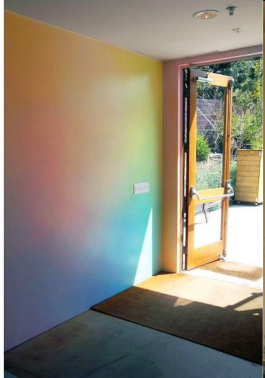
- Warm wood tones
- Pastel “Lazure” walls
- Intentional and comforting design
- Plenty of storage, simplicity
- Natural light, lamps
- Organic materials (wood, chalk, silk fabrics, soil)
- Decor = real plants, class artwork
- Striving for Beauty

Values

- *Fine Arts*: high quality materials... watercolors, colored pencils, beeswax crayons, chalkboards
- *Craftsmanship*: handwork, violin, gardening, cooking
- *Movement*: field games, outdoor class activities, studying through games
- *Nature*: phenomenological science, outdoor classes, nature study

Steiner & Goethe, golden ratio



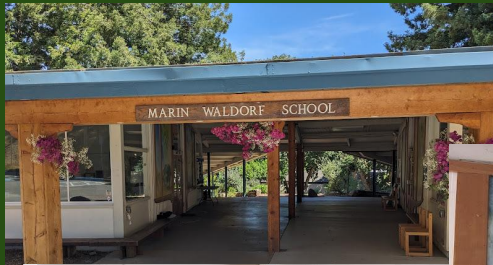


Timeless Craftsmanship



Inspiring Campuses

- Meristem (Steiner) College: Stegman Hall
- Sacramento Waldorf School: Administration building, Library, Gymnasium
- Waldorf School of the Roaring Fork, Aspen, Colorado
- Live Oak Waldorf School, Meadow Vista
- Marin Waldorf School, San Rafael



arm, Santa Rosa



Waldorf School of the Roaring Fork



Sacramento Waldorf School

